

## Instructions for activating TMC on you're MY Series MY50 and MY55:

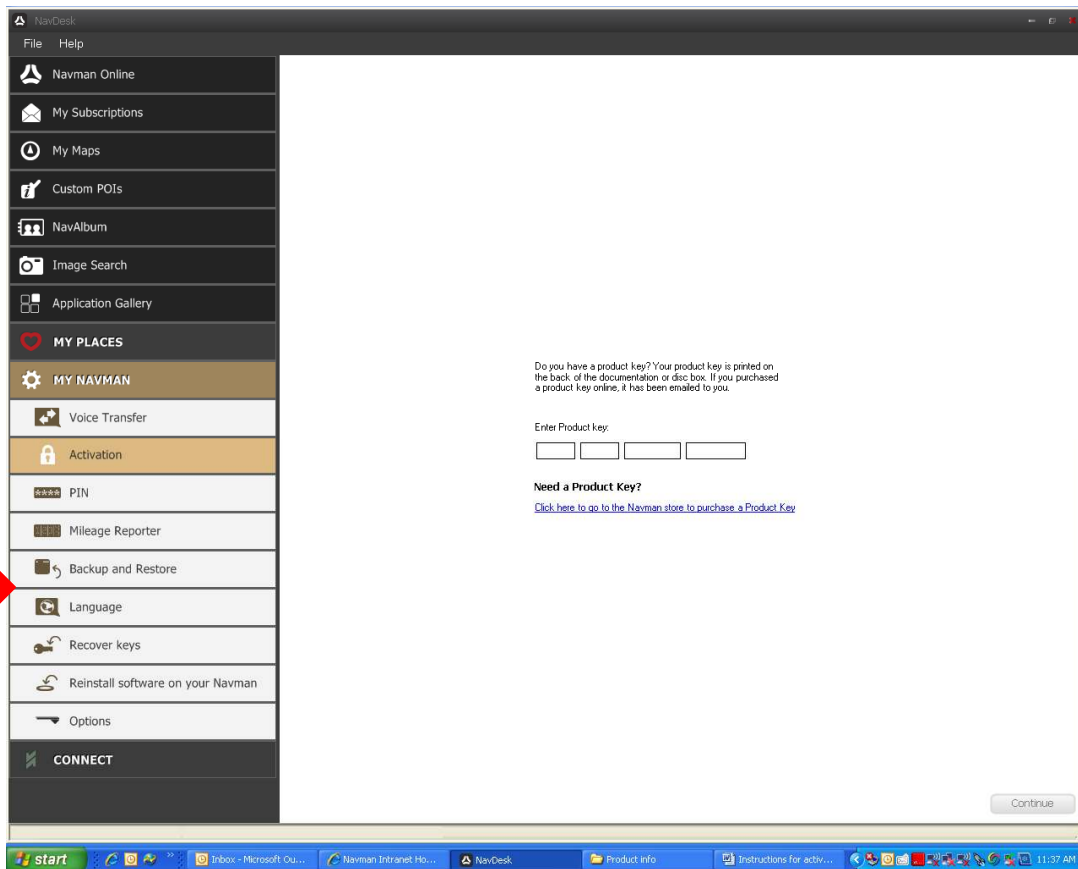
Please note you will require an internet connection to complete installation

1. Turn on your device and select **Main Menu > Preferences > About**
2. Start **Navdesk 2009**



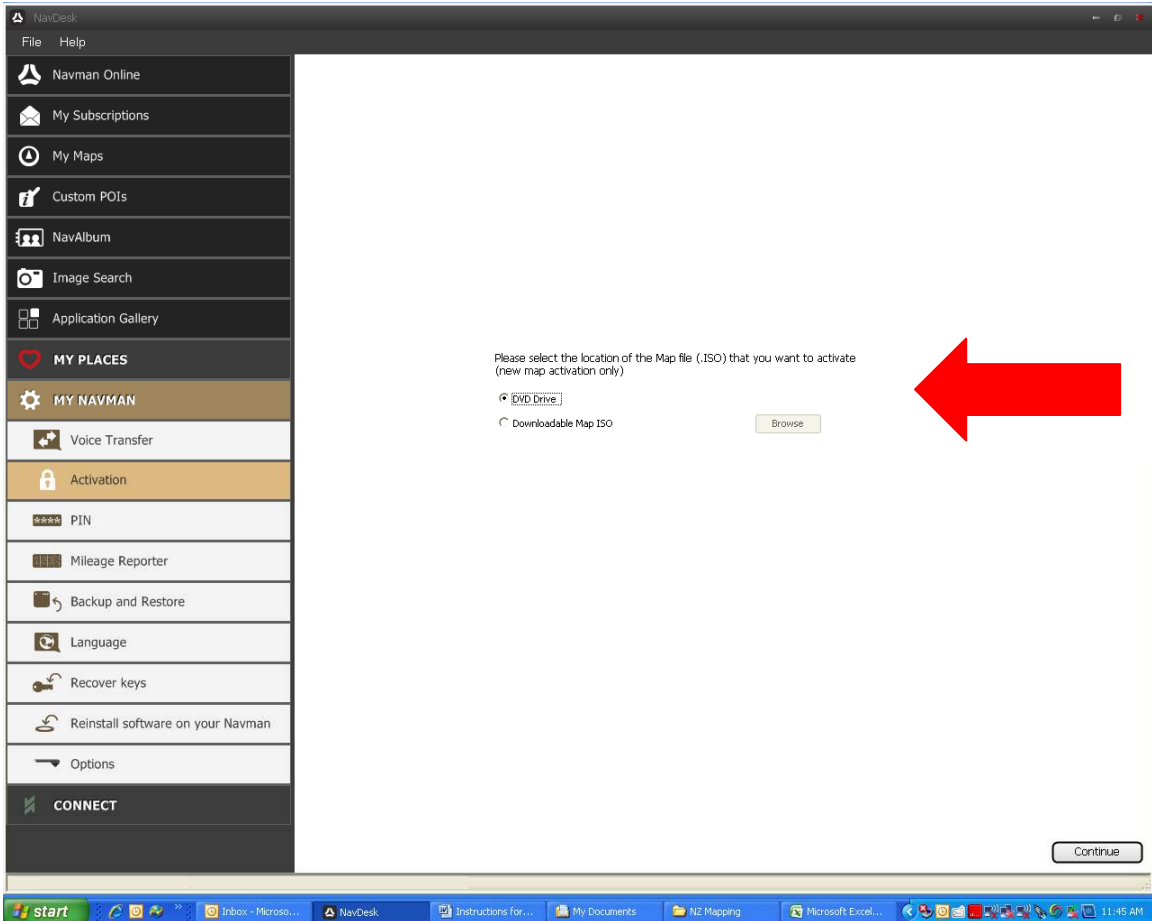
This software is supplied on a disc with your Navman unit.

3. Select **MY NAVMAN** – then **Activation** and the following screen will appear



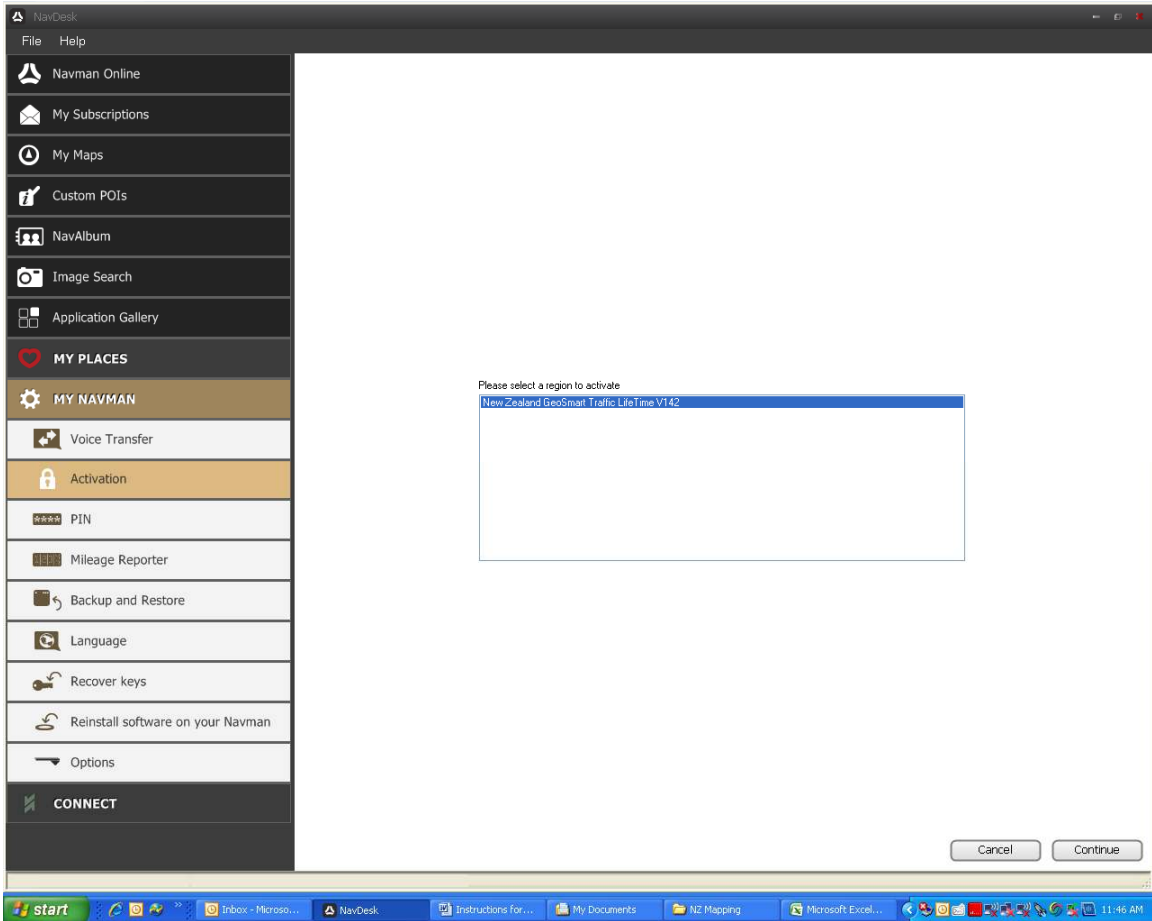


4. Enter the **TMC Activation code** (sent via email) into the 4 boxes and select **continue**
5. Select the **DVD drive** (ensure DVD is in PC) and select **continue**



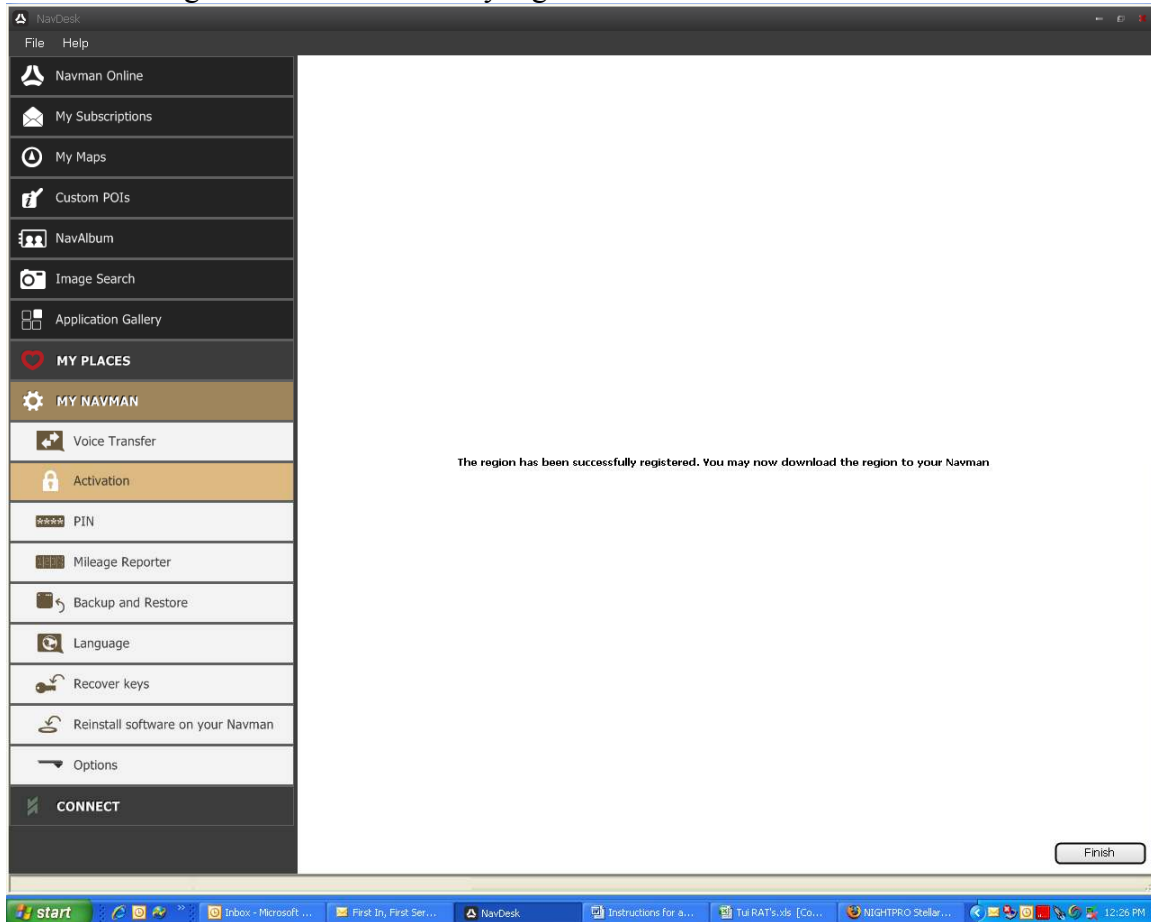


6. Select the region **New Zealand Traffic** and select **continue**





7. The region should successfully register. Select **Finish**



8. Disconnect the device from your computer. Your Navman MY Series is now ready to receive live traffic updates. Please remember to connect your supplied. Please note that you will need the 12v DC lead plugged into device in order receive TMC as it act as an antenna.

**Remember to register your device online and receive 15% off the online store!**

For TMC coverage and availability in your local area, please contact AA Traffic ( <http://maps.aa.co.nz/traffic> ) for more information.

For further information please refer to your user manual. If there are any problems, please contact Navman Customer Support:

- <http://www.navman.com/in-car/3294/New-Zealand/Navman-New-Zealand/Customer-Support/>
- 1800 GONAVMAN (1800 466 628) between the hours of 10:30am and 7:00pm EST, Monday to Friday